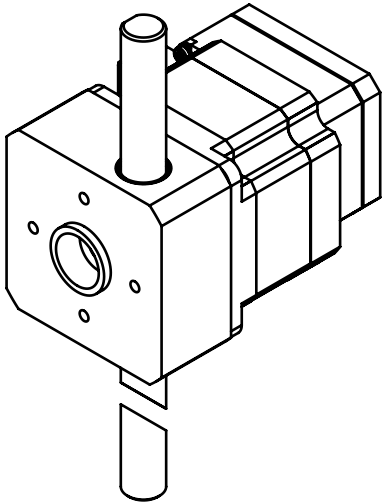
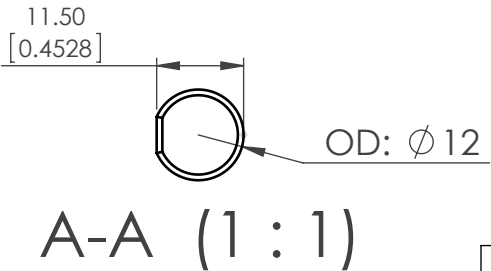
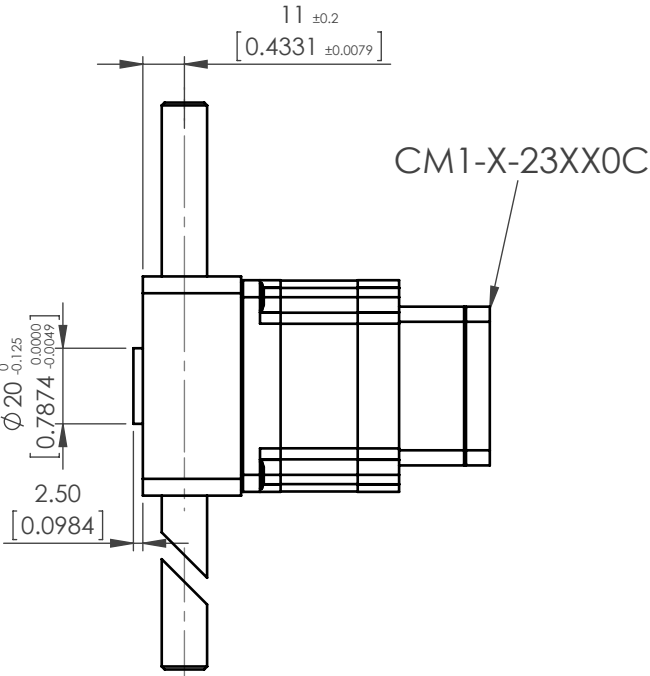
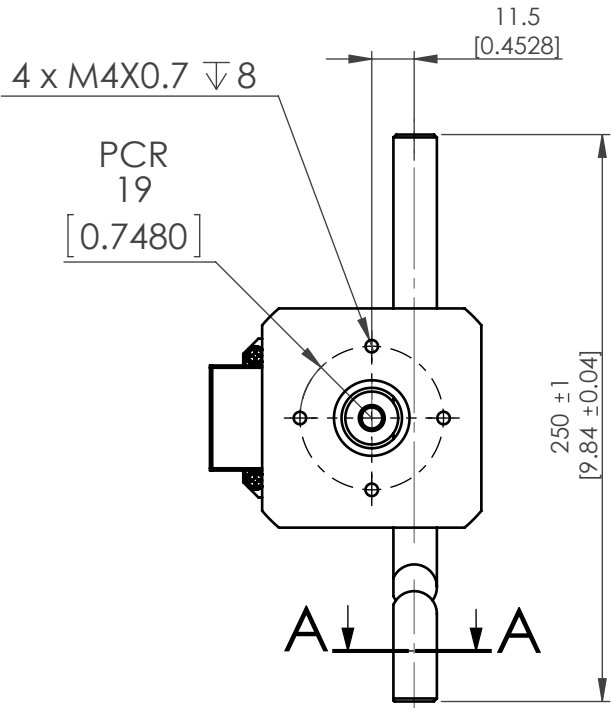
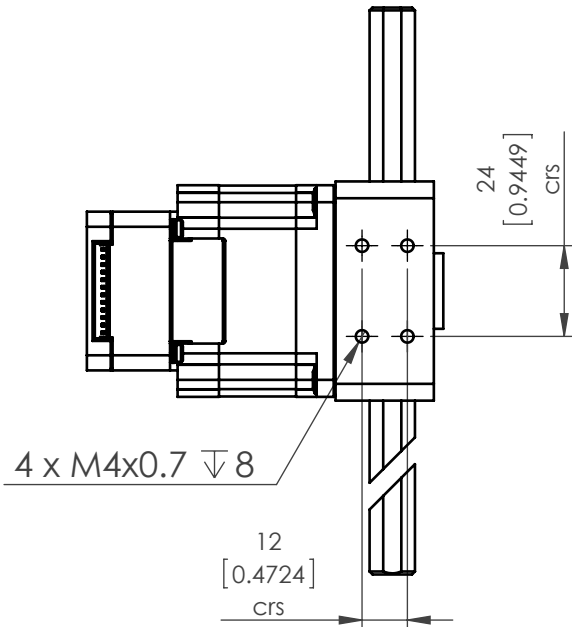
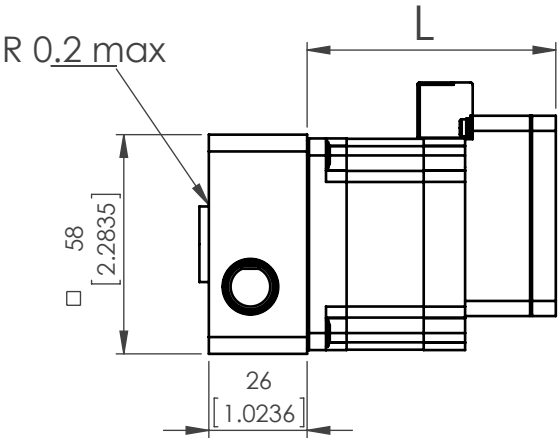


TECHNICAL INFORMATION


Part Number	RRA23-12-250-23S30C	RRA23-12-250-23L20C
Continuous Axial Force (N)	30	90
Momentary Load (N)	150	150
Travel Range (mm)	150	
Resolution	0.00085mm with 50,000 steps/rev	
Max Speed	300mm/sec	
Tempurature Range	Between 0°C and 40°C	
Repeatability	0.012mm	
Side Wobble (fully extended)	±0.2mm	
Life time	5 million cycles minimum (based on 40mm stroke)	
Backlash	0.06mm linear movement	
Rack material	440B grade stainless steel	
Pinion Material	St Steel 17-4Ph Coated	
Lubrication	PTFE based grease	



Motor	L
CM1-X-23S30C	65.8
CM1-X-23L20C	99.8



UNITS: mm [inch]

Unless otherwise specified, tolerance to be: CNS 4018 IT 14 Linear measures 0.5-3 ± 0.1 3-6 ± 0.1 6-30 ± 0.2 30-120 ± 0.3 120-315 ± 0.5		NAME	DATE	DO NOT SCALE DRAWING	DIMENSIONS ARE METRIC
DRAWN		M. Dank	Jan. 26, 2012	TITLE: RRA23 Racktuator	
CHECKED					
ENG APPR.					
PROPRIETARY AND CONFIDENTIAL THE INFORMATION CONTAINED IN THIS DRAWING IS THE SOLE PROPERTY OF MYOSTAT MOTION CONTROL INC. ANY REPRODUCTION IN PART OR AS A WHOLE WITHOUT THE WRITTEN PERMISSION OF COOLMUSCLE INC. IS PROHIBITED.		 Myostat Motion Control Inc. +1 905-836-4441 www.myostat.ca		SIZE B	PRT. NO. RRA23-12-250-23XX0C
				SCALE: 1:2	WEIGHT: -
				REV 1.2 SHEET 1 OF 1	